

**s-Laue**

— Desktop/Portable, Easy Measurement —

Application / Features

- ◆ Air cooling • Compact
- ◆ Easy operation • Fast measurement
- ◆ Orientation check • Adjustment
- ◆ Crystalline check

Measurement procedure

**STEP.1**

**Sample set**

Easy to set sample through CCD Camera



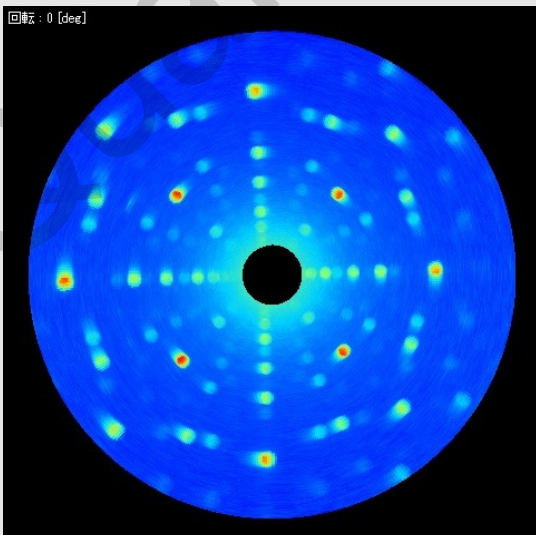
**STEP.2**

**Measurement start**

- X-ray irradiation
- Detection

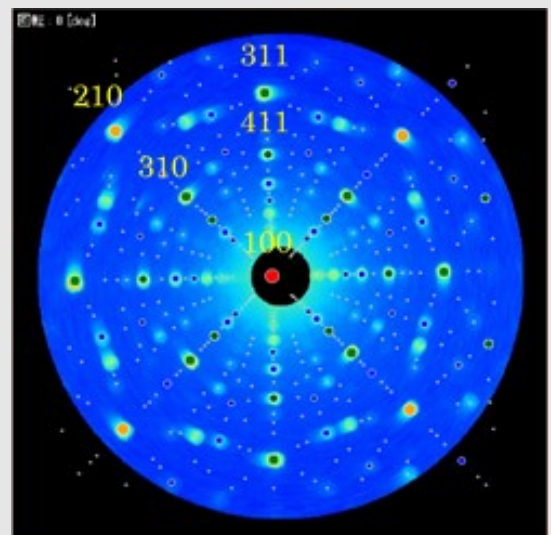


**STEP.3**



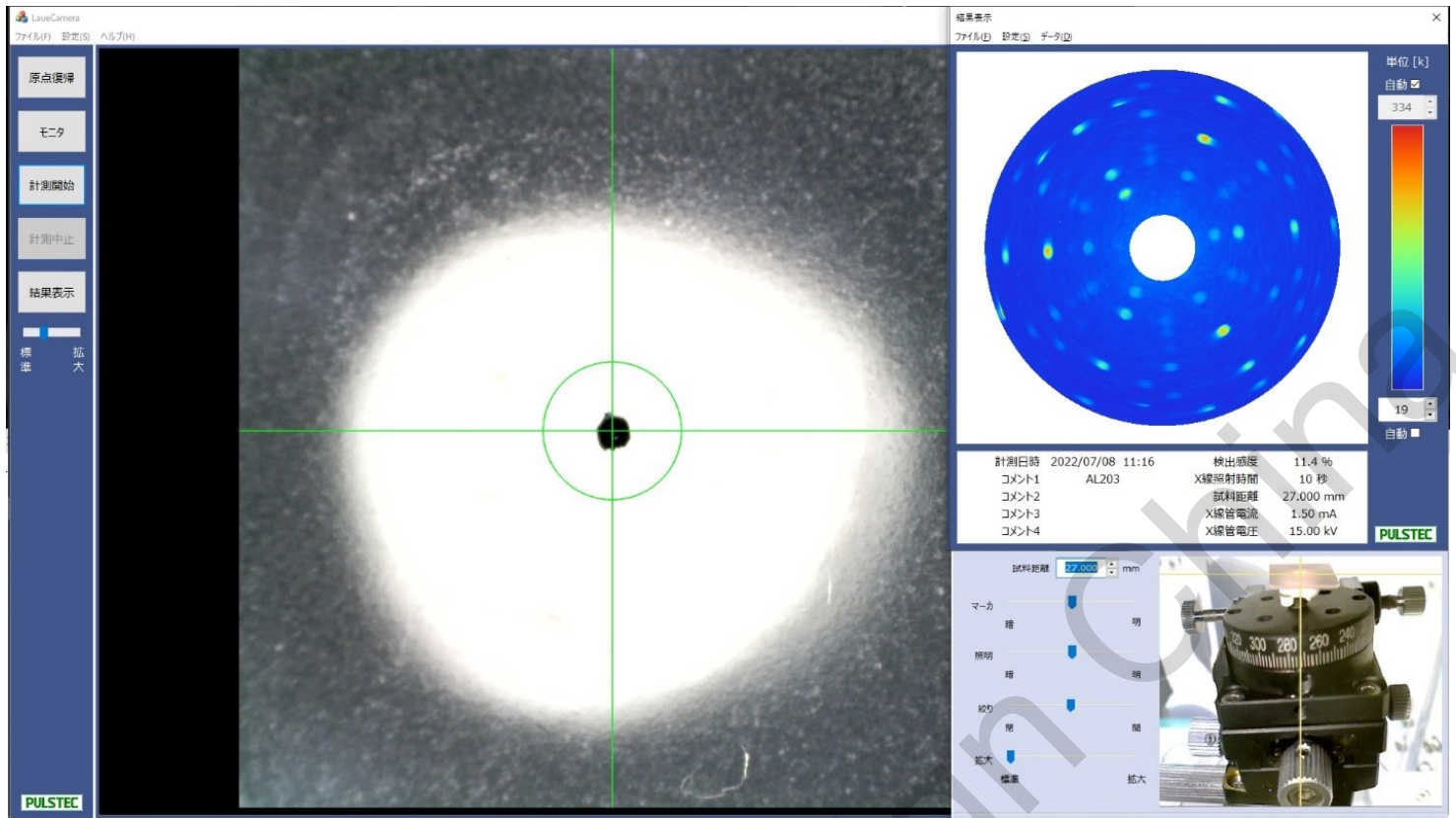
Before fitting

**STEP.4**



After fitting

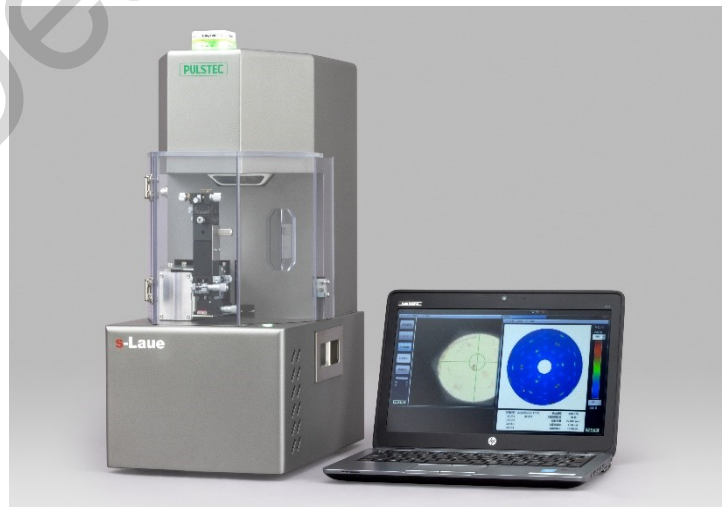
# Software·Data display



## Specification

X-ray source	W (Tungsten)
Voltage/Current	30kV/1.5mA
Cooling	Air cool
Incident angle	0 degree
Irradiation spot	φ0.8mm (Standard collimator)
Sample distance	27mm
Measurement time	60secs ※Typical
Sample stage	6 axis (Θ/Tan./Rad./X/Y/Z)
Power	AC100~240V,50/60Hz
Power consumption	150W max
Other	Door Interlock

## Equipment



※Please feel free to ask if the sample is large or on-site measurement, such as single crystal turbine blade.  
Portable type will be available.

Large sample/On-site measurement